

WANT TO HAVE GREATER IMPACT?

Join the TH!NKing Revolution



THINK FC

• People • Place • Potential

Looking for useful, shareable and practical tools to make a difference?

In this brochure you will find:

- Community Connecting
- Thinking Tools & your own journal
- Include us in your bid ...

£100 off the price listed for Locality Members



“Enjoyable sessions with something for everyone. Can pick and choose which tool to use according to each individual young person.” **YMCA Manager**

“This is not just another training session. The tools are real and adaptable to help you focus on your tasks whether at home or at work and enable you to use the different one's to help you manage and relief anxiety and depression.” **Central England Cooperative, Mental Health Champion**



THINK FC

• www.thinkfc.org.uk •

CONTACT: For more information contact Deana at THINK FC

Deana@thinkfc.org.uk, Call :07974260453 www.thinkfc.org.uk

Community Connecting Day Workshop

AT A GLANCE

AIM – To work alongside people in communities to connect, find and build on strengths within the community and share the tools and resources. Enable people to take control and make better decisions, making a positive difference for themselves, their families and in their communities.

OUR SOLUTION

Community Connecting Workshops, including tools and resources – tailored to your needs.

WHAT DOES IT LOOK LIKE

- A full day session for staff, volunteers, and supporters. Tools include:
- Community Asset Bingo
- Learn and Share
- Helpful and Hindering
- Possibility Thinking!

PRICE :

£600 for a full workshop with tools and resources.
Plus VAT

WHAT TO EXPECT : Friendly, fun and authentic tools and resources to help to connect people and find hidden strengths.

WHAT YOU WILL LEAVE WITH :

A sense of excitement, belonging and with something practical to get on with that will make a difference.

WHO IS IT FOR?

Any person, group or organisation that wants genuine community engagement and believes that the solutions to positive social transformation are all around us, locked into the strengths and passions of local people and linked by the relationships we can make, the resources we can access and the tools we are given.

Image:

Shows Community Asset Bingo Board – can be used in person and on line

Community Asset Bingo

Fill the boxes on the card and build your community asset map.
Only include the positives! Will you get a full house?



THINK FC

• Authentic • Connect • Trust

Is it a **club** or an **association**?
e.g Football club, brownies, W.I.

Is it a **business**?
What do they do?

Ask what's your favourite **building**, and why?

Is it an **institution** like the nhs, a school, a church or the council?

Is it a **person**?
What gifts or skills did they share?

Is it a special **story**? How did it make you feel?

Could it be about **transport**?
What, where and when?

Or about a favourite **shop**?
What do they make or sell?

Is it a **manmade structure**? e.g A sculpture?

Is it part of the **natural environment**?
A favourite walk? A feature?

Is it about the **culture**?
What is your connection?

What else is important in your community?

Tool Sharing Package

AT A GLANCE

AIM – To make the world a more fair place – by sharing the tools and resources, normally reserved for ‘business professionals’ with young people and communities to support them to make the changes they want to make.

OUR SOLUTION

Sharing our simple, tried and tested tools in the easiest possible way:

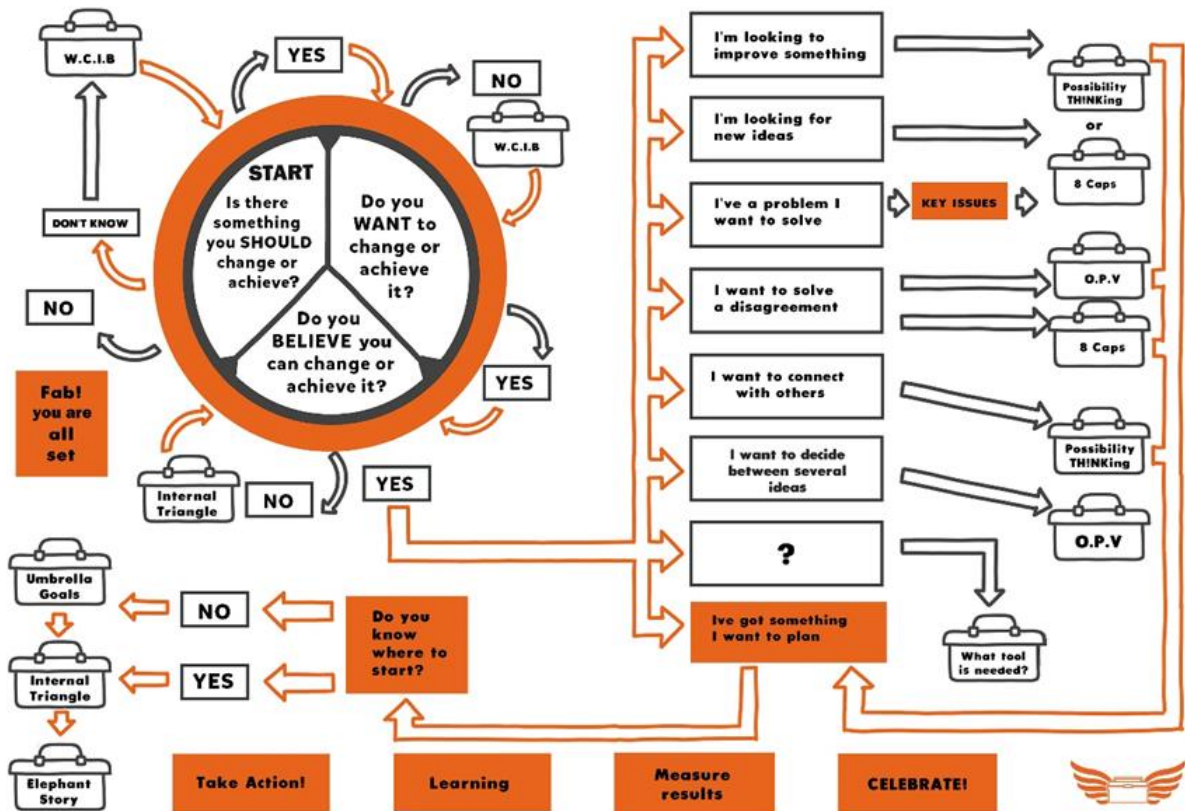
- to make a positive difference
- so it’s easy for people to use
- for lasting results & affordability

WHAT CAN WE OFFER

- **8 Tool sharing** sessions to your group (online or in person) over a period of 8 weeks for up to 20 participants
- **Journals for each participant**

WHAT WE ARE LOOKING FOR

- People that ‘get it’ that want to include the Tools in what they do



For more info please visit our website www.thinkfc.org



WHAT TO EXPECT : A unique, tailored programme that shares simple, tools in a way to make a positive difference, they can be used straight away as part of your project, group or activity!

WHAT YOU WILL LEAVE WITH : Simple, tools that make a positive difference, that you can use at work, at home or in the community and share with others.

WHO IS IT FOR? : Any group that is looking to create a positive impact for themselves, or for other people in their life, work or community

PRICE : £2,400 Plus VAT To include all materials, postage, workshops and evaluation.

Include us in your bid...

Looking to connect people ? looking for ideas ? looking for fun, interactive and useful tools that can help you and others make a difference ? Add us in your bid and we can help you deliver your project.

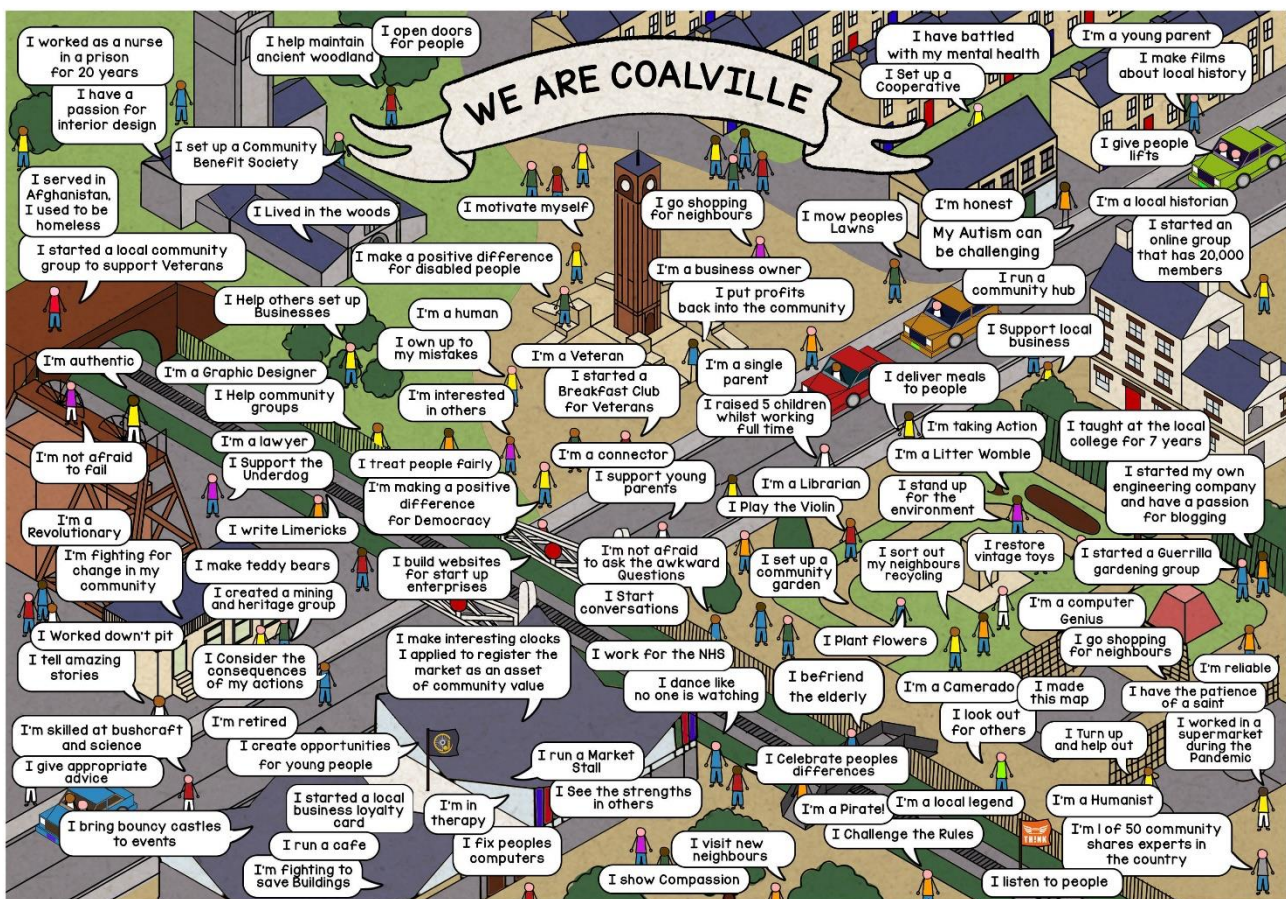
Include £5k in the bid and get an 8 week THINKing tools course, a community connecting workshop and 100 physical copies of your very own bespoke journal. We can add a Wicked Spreadsheet Workshop too if you are planning a building takeover!

Bespoke Journals ...

Looking to create your own journal? We can share our tools and resources and you can have your own Journal – branded to your specification. Ask us for more info.

WE ARE ... (your place!)

Get your very own template to use in your town or community – contact us for more details. Or download the free blank one from the Coalville C.A.N. website. www.coalvillecan.org.uk



Hi I'm Victoria Herriman. I created this map of Coalville because I was inspired by the work of Pen Mendonça, Jim Thomas and Melanie Henwood. and Cormac Russell.

Looking to take over a building? Need a Tool to quickly assess the financials? Look no further – have a play with the **Wicked Spreadsheet!**

The **Wicked Spreadsheet** is an interactive tool that provides you with a broad overview of financial viability and projections.

Created by Deana (THINK FC) and Brian (Co-operative Assistance Network Limited)

www.can.coop – [DIRECT LINK HERE](#)